



# MOSSIDE

## VILLAGE PLAN

AUGUST 2011

# Contents

## Vision Statement

“A vibrant and sustainable village and community where people support one another and are committed to improving the environmental, social, cultural and economic quality of village life for residents and visitors.”

		Page	Sections
1.	Introduction and Background	4-5	1
2.	Village Plan Process	6-7	
3.	Baseline Information	8-9	
4.	Needs Analysis	10-11	
5.	Existing Plans and Strategies	12-15	
6.	Planning History	16-17	
7.	SWOT Analysis	18-19	
8.	Consultation Process	20-31	2
9.	Developing Proposals	32-41	3
	Appendices	42-51	4



# Introduction and Background

This Village Plan for Mosside contains a collective vision of what people who live in Mosside would like to see, as well as a detailed action plan for achieving this vision.

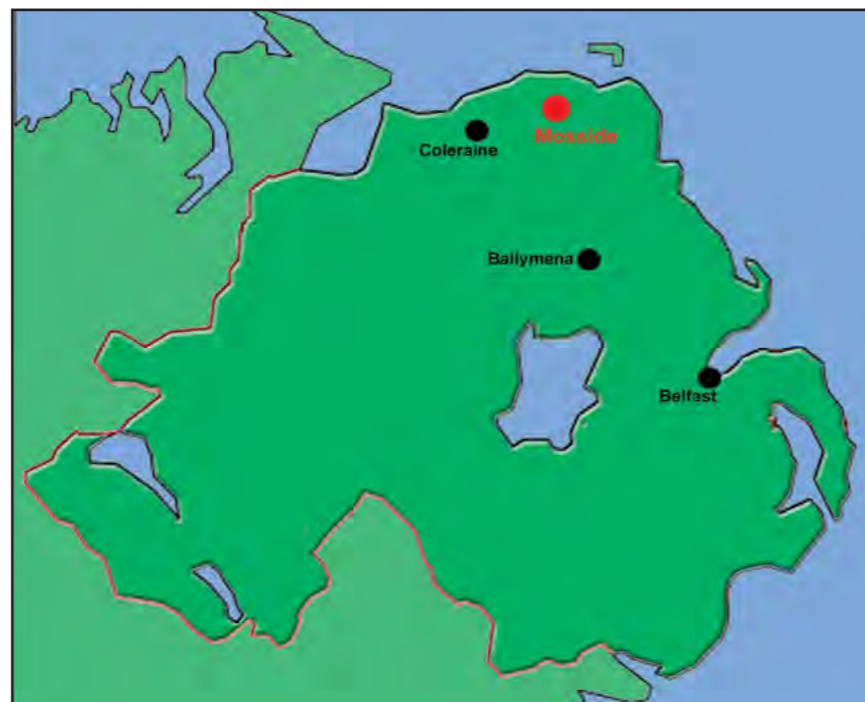
Over a number of months local residents in Mosside put forward their views about how they would like to see their village develop in the next five years.

This process was assisted by Mosside Development Group working with Moyle District Council, the Northern Ireland Housing Executive and other statutory agencies and local groups in the area. The process has been facilitated by Community Places.

Over the past few months these groups, organisations and individuals put forward their views and generated ideas and proposals for improvements and developments for the future.

The Village Plan will help local communities influence statutory bodies and others to respond to local needs as well as opening up opportunities for funding. The Village Plan includes a number of priority projects which have emerged from consultation with the local community.

Funding for the Village Plan project comes from the NE Rural Development Programme Village Renewal Measure, which is being part funded under Axis 3 & 4 of the Northern Ireland Rural Development Programme 2007-2013 by the European Union and the Department of Agriculture and Rural Development. Moyle District Council contributed 25% of the cost of the project.



Mosside village is located in the Moyle District Council Area, adjacent to the main B67 road between Coleraine which is approximately ten miles to the west and Ballycastle six miles to the north east. The village is in the electoral ward of Mosside and Moyarget. The Northern Area Plan 2016 designates Mosside as a small village in the settlement hierarchy. The village is a minor service centre providing a limited range of convenience shopping and other facilities.

Mosside Development Group was established in September 2002 to develop community infrastructure. Mosside was one of ten areas selected by the Community Foundation for Northern Ireland (CFNI) programme Communities in Transition. In 2005 Mosside Development Group purchased a portacabin in order to have meeting space within the village. The portacabin is equipped with a computer, printer,

copying facilities, a meeting room, kitchen and bathroom. Acquiring the portacabin has been essential for the operations of Mosside Development Group.

Mosside Development Group co-ordinates with various statutory agencies such as Moyle District Council and the Ulster Scots Agency. It also works closely with the local groups in the area.

Mosside Development Group runs a number of projects, including:

- Discovering Mosside Munnis project
- Ulster Scots word Park and text paving
- Ulster Scots Heritage book "whar ar ye frae?"
- Sporting heroes murals project
- Social evenings
- Shopping trips
- Cultural events
- Christmas Dinner



# Village Plan Process

The consultation methods were discussed with Mosside Development Group and Moyle District Council. Community Places designed a Village Plan process to suit the needs of the village.

It was agreed that a range of consultation methods would be used to gather views from groups and individuals who live in and who visit Mosside.

The key steps included:

- 1. Briefing meetings**
- 2. A tour of the village**
- 3. Contacting key groups and organisations in Mosside**
- 4. Desktop analysis**
- 5. Publicity and promotion of events**
- 6. Community Survey**
- 7. Consultation feedback event**
- 8. Action Planning**
- 9. Development of the plan**
- 10. Finalising the plan**
- 11. Launching the plan**

The consultation included:

- Workshop with Bowling Club, Clodders Club Presbyterian Women's Group and Monday Club
- Workshop with Youth Club, Girls Brigade and Boys Brigade
- Meetings were held with staff from See Saw Playgroup and Mosside Mum and Toddlers group and the Mosside Development Group.

Community Surveys were distributed to all households in Mosside and the parents of See Saw Playgroup. 140 surveys were distributed in total, 47 were received in response which is an overall response rate of 34%.

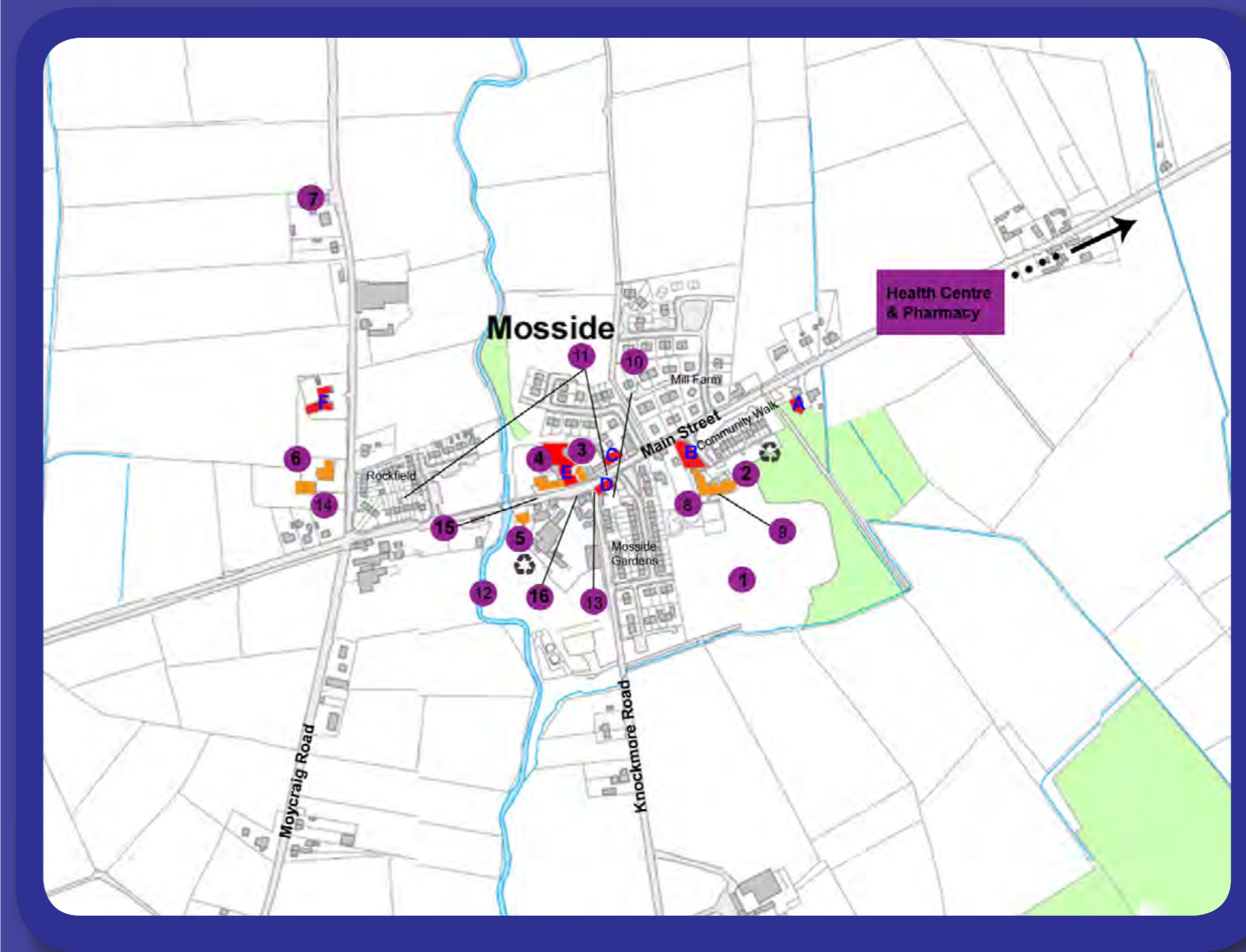
A consultation feedback event was held to inform local residents and those who participated in the workshops about the issues in Mosside and ideas on how to improve the village.



# Baseline Information

The following table and map set out a baseline audit of the social, community, environmental and Council assets in the village.

Asset	Name	Map Ref
<b>Halls</b>	<ul style="list-style-type: none"> <li>Farmers Hall</li> <li>Presbyterian Church Hall</li> <li>Orange Hall x 2</li> </ul>	<ul style="list-style-type: none"> <li>• 7</li> <li>• 6</li> <li>• X</li> </ul>
<b>Nearest Primary Schools</b>	<ul style="list-style-type: none"> <li>Bushvalley in Stranocum - 2 miles from Mosside</li> <li>Straidbilly in Liscolman - 2 miles from Mosside</li> </ul>	
<b>Churches</b>	<ul style="list-style-type: none"> <li>Presbyterian Church</li> <li>Church of Ireland (within 5 mile radius)</li> <li>Reformed Presbyterian Church (within 5 mile radius)</li> </ul>	<ul style="list-style-type: none"> <li>• 14</li> </ul>
<b>Facilities/ Services</b>	<ul style="list-style-type: none"> <li>Community Centre</li> <li>Portacabin</li> <li>Play Park</li> <li>Playing Fields</li> <li>Health Centre</li> <li>See Saw Playgroup</li> <li>Recycling Points</li> <li>Ulsterbus Service</li> <li>Floral boxes</li> <li>Public art initiative</li> <li>Community Notice board</li> <li>Mosside River</li> <li>Library Van Stopping Point</li> </ul>	<ul style="list-style-type: none"> <li>• 2</li> <li>• 2</li> <li>• 8</li> <li>• 1</li> <li>• 9</li> <li>• 13</li> <li>• 11</li> <li>• 10</li> <li>• 12</li> <li>• 15</li> </ul>
<b>Groups in the area</b>	<ul style="list-style-type: none"> <li>Clodders Club (Horseshoe throwing)</li> <li>Women's Institute</li> <li>Girls Brigade</li> <li>Boys Brigade</li> <li>Youth Club</li> <li>Young Farmers</li> <li>Presbyterian women group</li> <li>Monday Club</li> <li>Mum and Toddlers</li> <li>Mosside Development Group</li> <li>Mosside Bowling club</li> </ul>	
<b>Businesses</b>	<ul style="list-style-type: none"> <li>The Chip shop</li> <li>Local Shop x 2</li> <li>Pub</li> </ul>	<ul style="list-style-type: none"> <li>• 5</li> <li>• 3</li> <li>• 4</li> </ul>
<b>Derelict/ Opportunity Sites</b>	<ul style="list-style-type: none"> <li>Petrol Station - Moyarget Road</li> <li>Land adjacent to No 2 Main Street</li> <li>16-20 Main Street</li> <li>15-17 Main Street</li> <li>Land adjacent to No 31 Main Street</li> <li>School Site - 201 Moycraig Road</li> </ul>	<ul style="list-style-type: none"> <li>• A</li> <li>• B</li> <li>• C</li> <li>• D</li> <li>• E</li> <li>• F</li> </ul>



# Needs Analysis

Mosside is located in the Mosside and Moyarget ward which has a population of 823 in 2001. This ward area is considered rural.

The population breakdown in Mosside and Moyarget ward is shown below:

## Population and Households

	Mosside/ Moyarget Ward	Moyle LGD
Population	827	15933
Number of Households	302	5888
Under 16 years old	22.8%	23.7%
Over 60 years old	21.5%	19.6%
Males	49.6%	49.1%
Females	50.4%	50.9%
Average household size	2.74	2.71
Owner Occupied	66.9%	67.9%
Rented	33.1%	32.1%
Owned outright	40.7%	37%

Reference: 2001 Census Data

## Education

	Mosside/ Moyarget Ward	Moyle LGD
Number of adults qualified to degree level	8.8%	13.3%
Number of adults with no qualifications	68.1%	62%
School leavers with at least 5 or more GCSEs at Grade C	53.8%	68.8%
Number of people enrolled in Higher Education courses	25	590
Number of people enrolled in Further Education courses	45	992

Reference: 2001 Census Data

## Employment

	Mosside/ Moyarget Ward	Moyle LGD
Employees in Mosside & Moyarget ward (2007)	63	3445
16 -74 Year olds Economically Active	59.5%	58.7%
16 -74 Year olds Economically Inactive	40.5%	41.3%
Adults unemployed	4.5%	4.8%
Adults unemployed long term	53.8%	44.4%
Registered farms (2008)	51	579
People involved in agriculture	103	124849
Multiple Deprivation Measure	120 out of 582 (within top 20-30% most deprived wards)	

Reference: 2001 Census Data

## Health

	Mosside/ Moyarget Ward	Moyle LGD
Male Life Expectancy	> 70 years old (less than NI average 76.2)	77.6
Female Life Expectancy	< 85 years old (greater than NI average 81.2)	82.1
Persons in good general health	69.5%	69.4%
Persons limiting long term illness, health problem, disability	22.1%	21.2%

Reference: 2001 Census Data

## Mosside and Moyarget Ward Map



Hare Public Art Sculpture  
Rockfield Gardens

# Existing Plans and Strategies

## Draft Northern Area Plan (dNAP) 2016

The following is a summary of the main policies that apply specifically to Moss-side. In addition to area plan policies, regional planning policies and guidance will be taken into consideration in assessing planning applications.

The settlement limit is outlined in black on the map to the right. The dNAP states that “the development limit has been defined to consolidate the existing village form.”

### Open Space

Areas of existing open space are shown on the map in green. Policies relating to open space are contained within Planning Policy Statement 8: Open Space, Sport and Outdoor Recreation. All existing open space is protected under Policy OS1 of PPS 8.

### Local Landscape Policy Areas

Local Landscape Policy Areas are shown on the map opposite. Proposals for development within these areas will be considered within the terms of Policy ENV2 which states that, “Planning permission will not be granted for development proposals that would be liable to affect adversely those features, or combination of features, that contribute to the environmental quality, integrity or character of a designated LLPA. Where development is permitted, it will be required to comply with any requirements set out for individual LLPAs in the District Proposals. Where riverbanks are included within LLPAs, planning permission will only



be granted where access is provided to the river corridor as part of the development proposals. Where proposals are within and/or adjoining a designated LLPA, a landscape buffer may be required to protect the environmental quality of the LLPA.” Where additional control is considered necessary this is specified below.

### Designation MEL 01 Moss-side Water LLPA

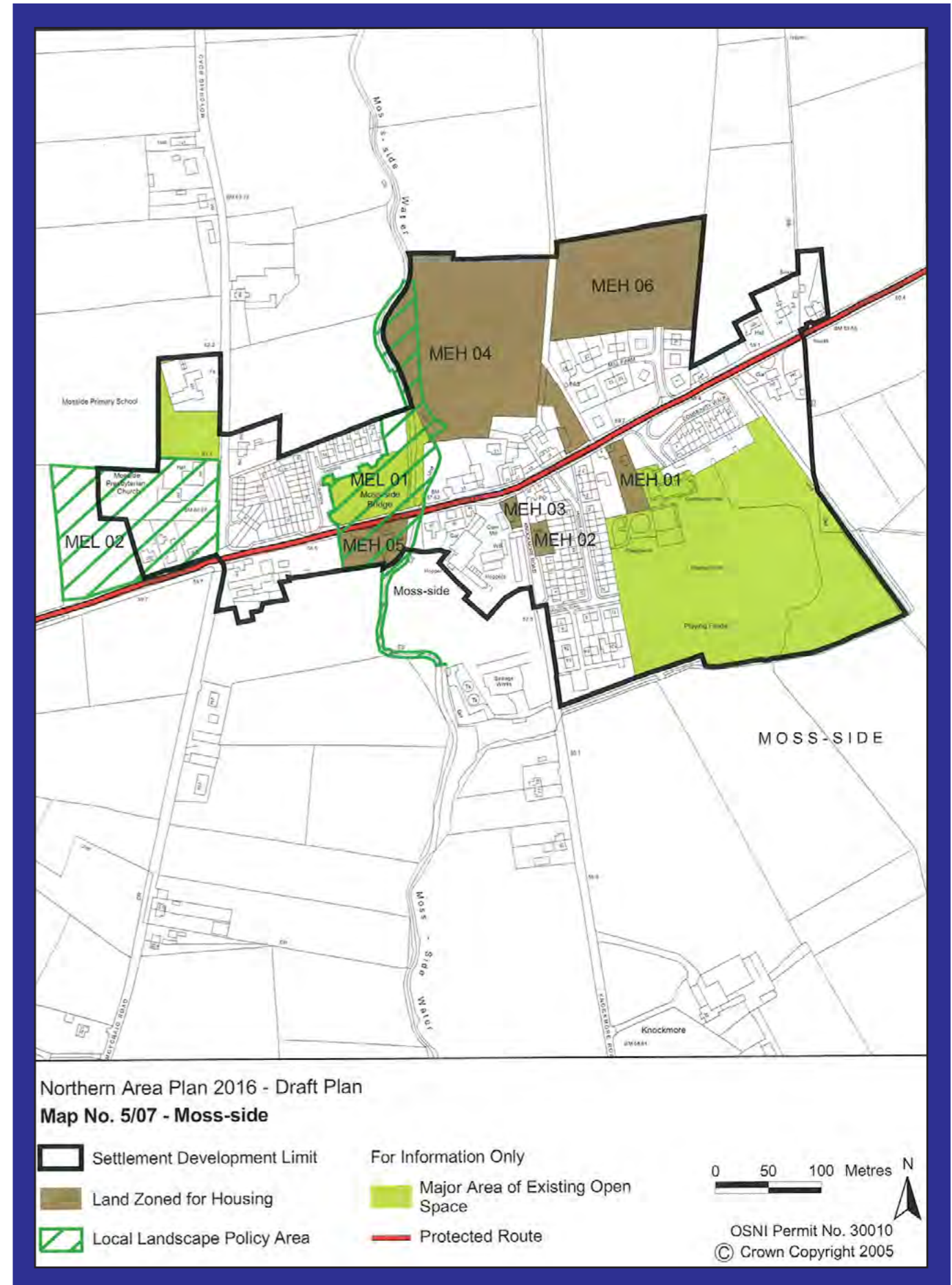
This LLPA includes the banks and associated open spaces along the stream, which provides a distinctive river corridor through the village.

### Designation MEL 02 Moss-side Crossroads LLPA

A Local Landscape Policy Area is designated as identified on Map No.5/07 – Moss-side.

### Land Zoned for Housing

Six areas within the Moss-side Settlement Development Limit are zoned for Housing these are marked in brown in the map.



# Existing Plans and Strategies

## Tourism

Tourism is a key industry for the Moyle District Council area and will be an important consideration in the development of the Village Plan. The following information highlights the key aims and objectives of the various tourism documents which influence the village.

### A Draft Tourism Strategy for Northern Ireland 2020

The draft Tourism Strategy sets out a vision to “Create the new Northern Ireland experience and get it on everyone’s Destination wish list.” Priorities for action have been identified under four themes to deliver this vision: People; Product and Places; Promotion and Partnership. Under the theme of Product and Places Priority A has been set to “Complete the development of the 5 signature projects and develop them into Signature Destinations. The associated Action Point (A2) states “Giant’s Causeway and Antrim Causeway Coast Area: Encourage the development of the Giant’s Causeway Visitor Centre to world class standards. Strategically influence infrastructural development of at least 22 key sites on the Causeway Coastal Route.

### Causeway Coast and Glens Tourism Masterplan, Executive Summary 2004

Mosside is located in the Causeway Coast and Glens Masterplan Area. Section D in this document which relates rural tourism and special interest areas such as product development. This is particularly relevant for Mosside as section D 1a actions to link inland areas with existing tourism product to the tourist trail through special interest trails and products. Mosside fits this very well in terms of the Ulster Scots heritage and culture associated with the village.

### Moyle District Council Tourism Action Plan 2011- 2015 “Developing a National Tourism Asset”

The Action Plan sets out 5 Strategic Themes:

#### 1. Place

The objective is to improve the interpretation of and access to the Glens within a managed sustainable tourism And recreation plan.

#### 2. Product Services

Includes provision of accommodation for visitors and

to improve the heritage and cultural offer of the area, also establish Moyle as a hub for activity tourism and maximise visitor spend from events.

#### 3. People

Involving the local community in tourism development and preserve and nurture understanding of local history and culture.

#### 4. Positioning

Promote public and private sector working and provide an identifiable tourism brand for all stakeholders. Provision of an integrated marketing framework for all key stakeholders to work together to attract key target markets. Develop a cultural promotional programme of Music, sport, Crafts, Literature as part of an events calendar to add to the authenticity of the visitor experience.

#### 5. Partnership

Through the Tourism Forum and steering group improve public and private partnership working; improve the understanding of the tourism product and delivery issues; work closely with external

tourism related agencies to increase awareness of the Tourism Action Plan.

### Causeway Coastal Route Interpretation Project

This £300,000 project is for the provision of “interpretative signage and structures at sixteen locations along the Causeway Coastal Route (CCR).” The project aims to ensure there is synergy between all the individual projects, creating a recognisable visitor experience on the Causeway Coastal Route.





# Planning History

1



3



4



6



1

Planning Ref:	Address	Proposal	Decision	Status
E/2007/0340/F	Moycraig Road, Mosside	Demolition of existing primary school & outbuilding & erection of 6 No Semi-detached dwellings, 6 No Townhouses & 4 No duplex dwellings with associated parking and landscaping	Granted 8-12-09	Not Developed

2

Planning Ref:	Address	Proposal	Decision	Status
E/2005/0271/F	Land to rear of Mill Farm Mosside	Residential development of 30 dwellings; roads, sewers and garages where indicated.	Granted 13-2-07	Development Started

3

Planning Ref:	Address	Proposal	Decision	Status
E/2006/0157/F	244 - 246 Moyarget Road Mosside	Demolition of all buildings and provision of residential development (consisting of 17 No dwellings, 2 No apartments and associated car parking).	Granted 11-3-09	Permission expires on 11-3-14

4

Planning Ref:	Address	Proposal	Decision	Status
E/2007/0444/F	16 -20 Main Street Mosside	Redevelopment of existing site to provide retail unit and 6 No one bedroom apartments	Granted 15-11-07	Permission expires on 27-1-14

5

Planning Ref:	Address	Proposal	Decision	Status
E/2006/0318/F	2 & 4 Main Street Mosside	Housing Development of 4 No town houses, 3 No apartments, 2 No semi-detached and 2 No detached houses (11 units).	Granted 6-8-2008	Permission expires on 29-7-13

6

Planning Ref:	Address	Proposal	Decision	Status
E/2006/0381/O	North Antrim Mills 30 Main Street Mosside	Redevelopment of former animal feeds mill with residential development including semi detached houses, town houses and apartments.	Granted 31-7-09	Not developed

## Strengths

- Location between Coleraine and Ballycastle
- Welcoming community that is respectful of traditions and heritage
- Many community groups in the area
- Community newsletter
- Village clean up schemes have been a success
- The community centre and portacabin are for community use
- The public art projects have improved the appearance of Mosside
- Recycling facilities
- Good community spirit
- Ulster Scots culture is very strong in Mosside
- Village notice board

## Opportunities

- Derelict sites could be improved for redevelopment
- Improving the local environment
- More people coming to Mosside to attend events for example the Summer scheme
- Tourism potential through promotion of Ulster Scots culture
- Organising additional social events and activities
- Improvements to community facilities
- Provision of information and advice through classes
- Mosside Fair Day

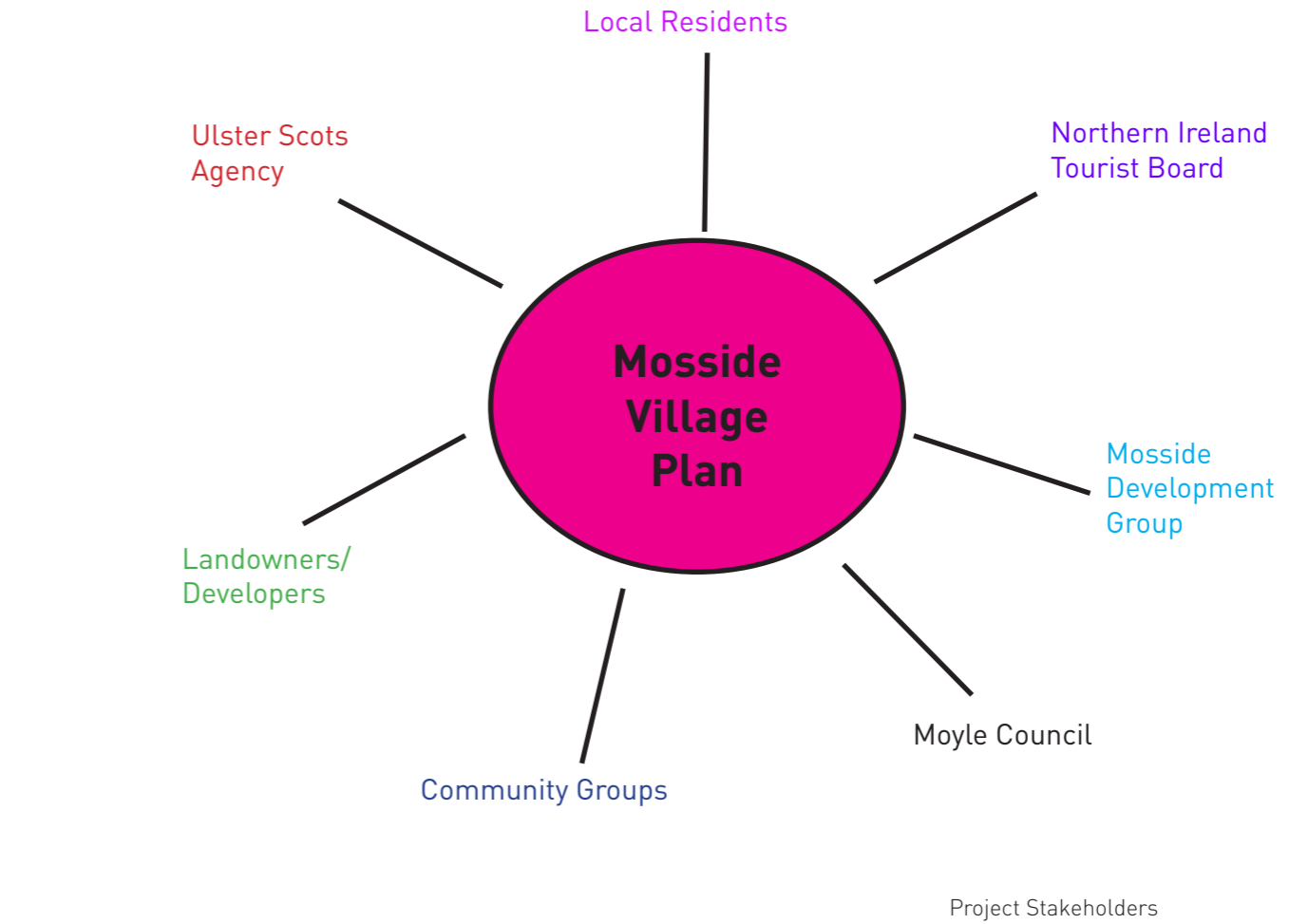
## Weaknesses

- Lack of a tourism product to make Mosside an attractive place to stop
- Poor access to services for example - no ATM or Post Office
- Poor public transport especially in the evenings
- Dog fouling
- Lack of community involvement
- Litter
- Dumping

## Threats

- Litter re-appearing after village clean up schemes have been done
- Not enough support from the local community to run events/ activities
- Anti-social behaviour
- No local school in Mosside
- Lack of employment in the village
- Communication difficulties in sharing information about events and activities
- Derelict buildings create a poor image for the village

# Consultation



Throughout the consultation process we were keen to hear from everyone who had an interest in Mosside. Consultation was carried out with the various groups in Mosside ranging from groups that involve young people, older people, sport related groups and church related groups in order to try to understand what people want for their area.

Every effort was made to gather views of the whole community, some groupings such as teenagers, young adults and the young farmers were less forthcoming and encouraging their engagement represents a challenge in implementing the Village Plan.

The consultation took the form of a community survey and mapping exercises/workshops. The main findings of these exercises are as follows.



# Community Survey

## What is good about Mosside?

quiet area  
Events neighbours  
Friendly Safe Nice  
Community maintained  
rural Family Nothing

## What is bad about Mosside?

Dereliction  
Dumping Antisocial  
Unattractive behaviour  
Facilities Transport  
No activities

Please see separate report for full details of the Community Survey results



## Consultation Process

Consultation has been on going throughout the of the Village Plan process . The majority of the people involved in the consultation were from Mosside. The age groups consulted varied from under 18 years old to over 60 years old. The age groups represented in the survey are shown in Figure 1. Individuals who did not live in Mosside were also involved in the consultation process. It was found when speaking with many of the groups in the village that individuals come to Mosside to use services in the village or to attend group meetings or events.

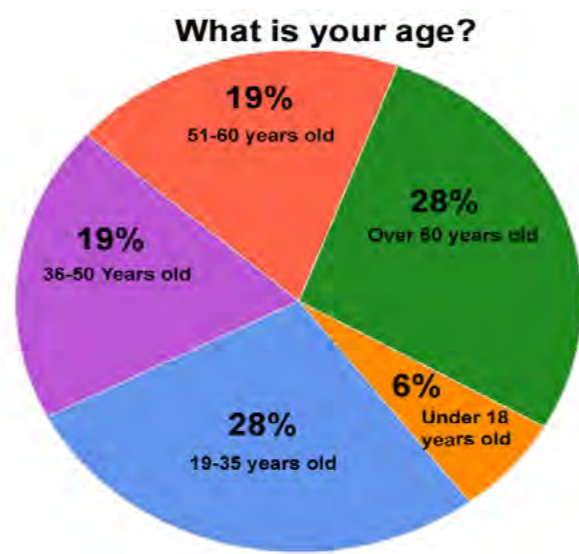


Figure 1  
Age  
Distribution of  
Participants  
in Community  
Survey

## Environmental

The key environmental issues in Mosside was derelict sites and vacant buildings. 80% of the community survey respondents noted this as a problem and all community groups consulted noted it as problem. Some residents stated "pressure should be put on developers to finish or maintain derelict sites."

### " Empty buildings are ugly"

The derelict sites in the village has had a knock on effect on dumping in the village this was especially noted at the old school site shown on the right.

Litter was highlighted as a problem in the village and also a lack of bins. Some groups mentioned young people need to become more involved in village clean up schemes. Some of the groups said the village clean up schemes were a success however litter reappears due to the lack of bins. 39% of respondents in the community survey noted dog fouling as a key problem. Group consultation also highlighted that there are no dog fouling bins at present in the village.

Respondents of the community survey stated that the streets in the village are not clean as a result of litter and dog fouling. Repairing and maintenance of pavements was mentioned by some as a key problem especially in the winter months after the snow.

The community survey highlighted 71% of respondents would like to see more trees and flowers in the village. Recently there has been improvements in Mosside in terms of seating and public art however the community survey showed that 51% of respondents would like to see more seating this was noted in the vicinity of Community Walk.

Community allotments were also noted as a potential project by community groups and respondents of the community survey.

It was noted by community groups and community survey respondents that signage for the village is poor especially in terms of locating the Community Centre. In the event of an emergency poor signage could potentially delay services.

## Key Problems in Mosside

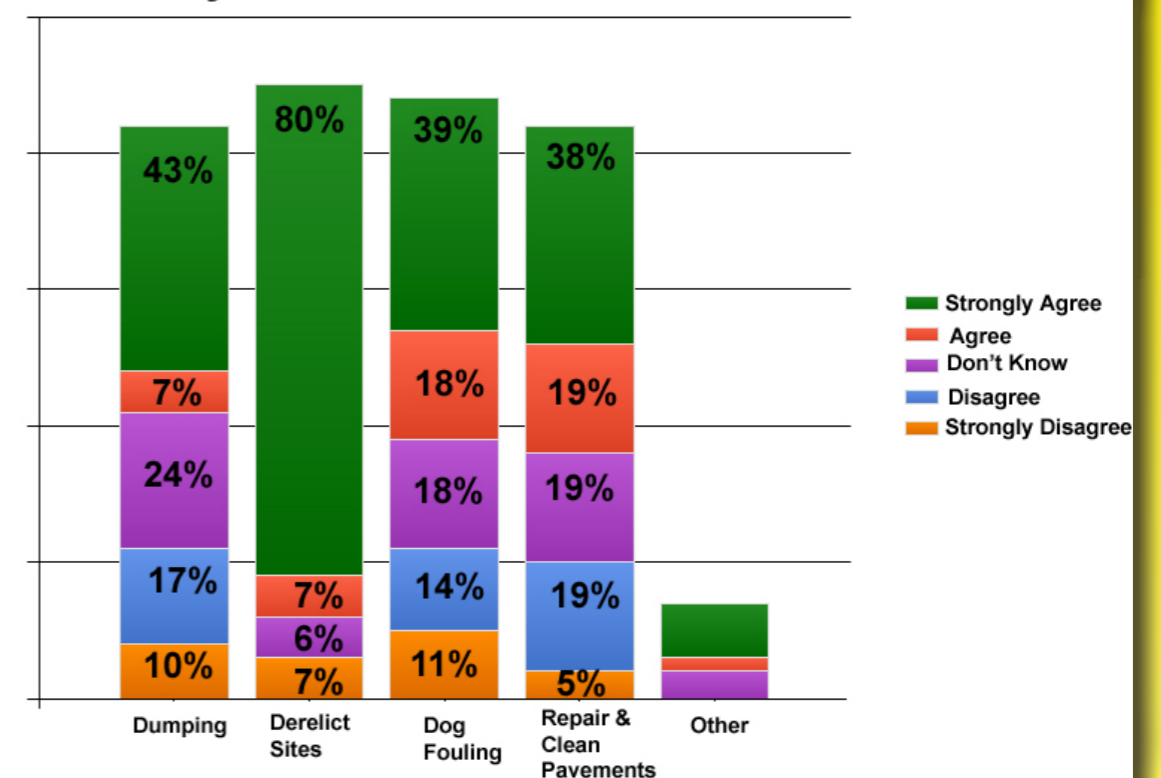


Figure 2

## What environmental changes do you think Mosside needs?

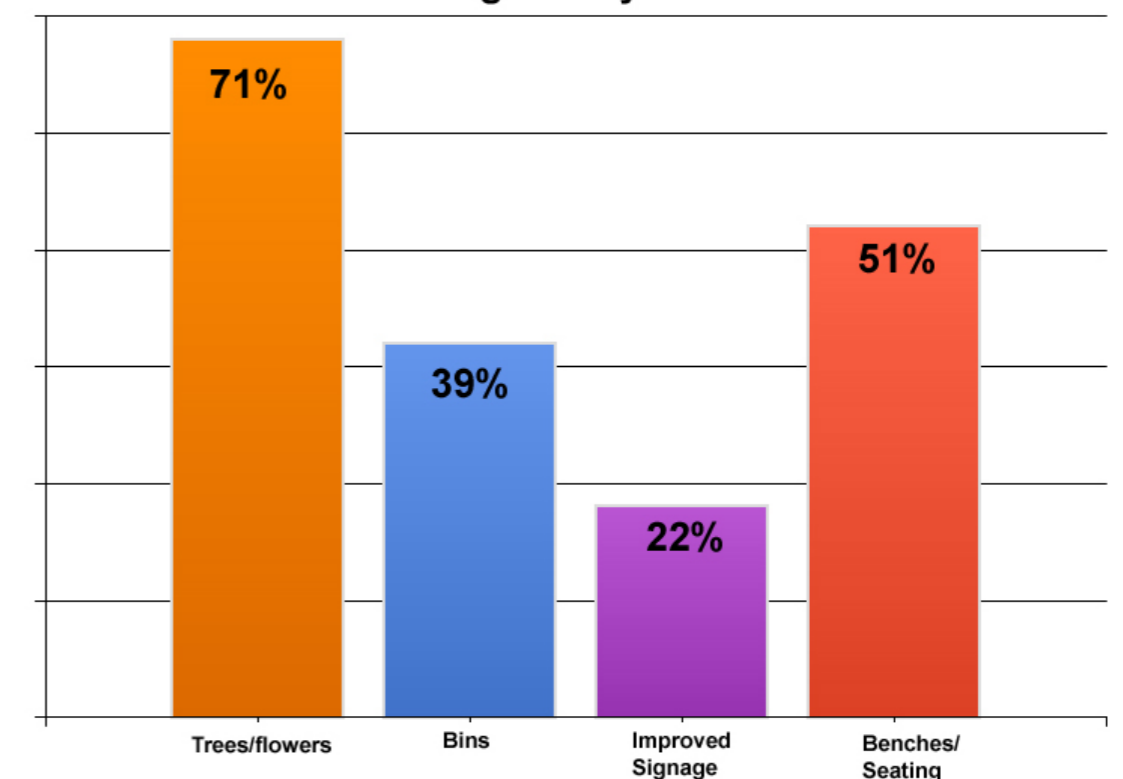


Figure 3



"Dog Fouling  
Bins"



" More trees and  
Flowers"

## Social

On the whole most people stated that Mosside is a quiet area to live where most people know each other and have strong family connections in the village. Community spirit in the village was generally good however it was mentioned that more support and involvement from local people is needed for events and activities.

There are many activities and events that have happened in the village that people would like to see more of. The most popular of these included activities for children (especially under 5 year olds) and young people, social nights such as darts, quizzes, dances, Ulster Scots events, activities for senior citizens, arts and crafts, health information days summer festival and sport activities. The popularity of these can be shown in Figure 4 below.

Many individuals during the consultation stated that Mosside is an attractive place to live and play and the recent improvements such as public art in the village has been welcomed.

Ulster Scots activities and events were very popular amongst the community in Mosside. Potential future events people would like in the village include events related to the Clodders Club, exhibitions, poetry, dance and music.

It was noted in the consultation that community events similar to those mentioned above have happened previously in the village but due to a lack of community spirit there was a poor uptake of participants.

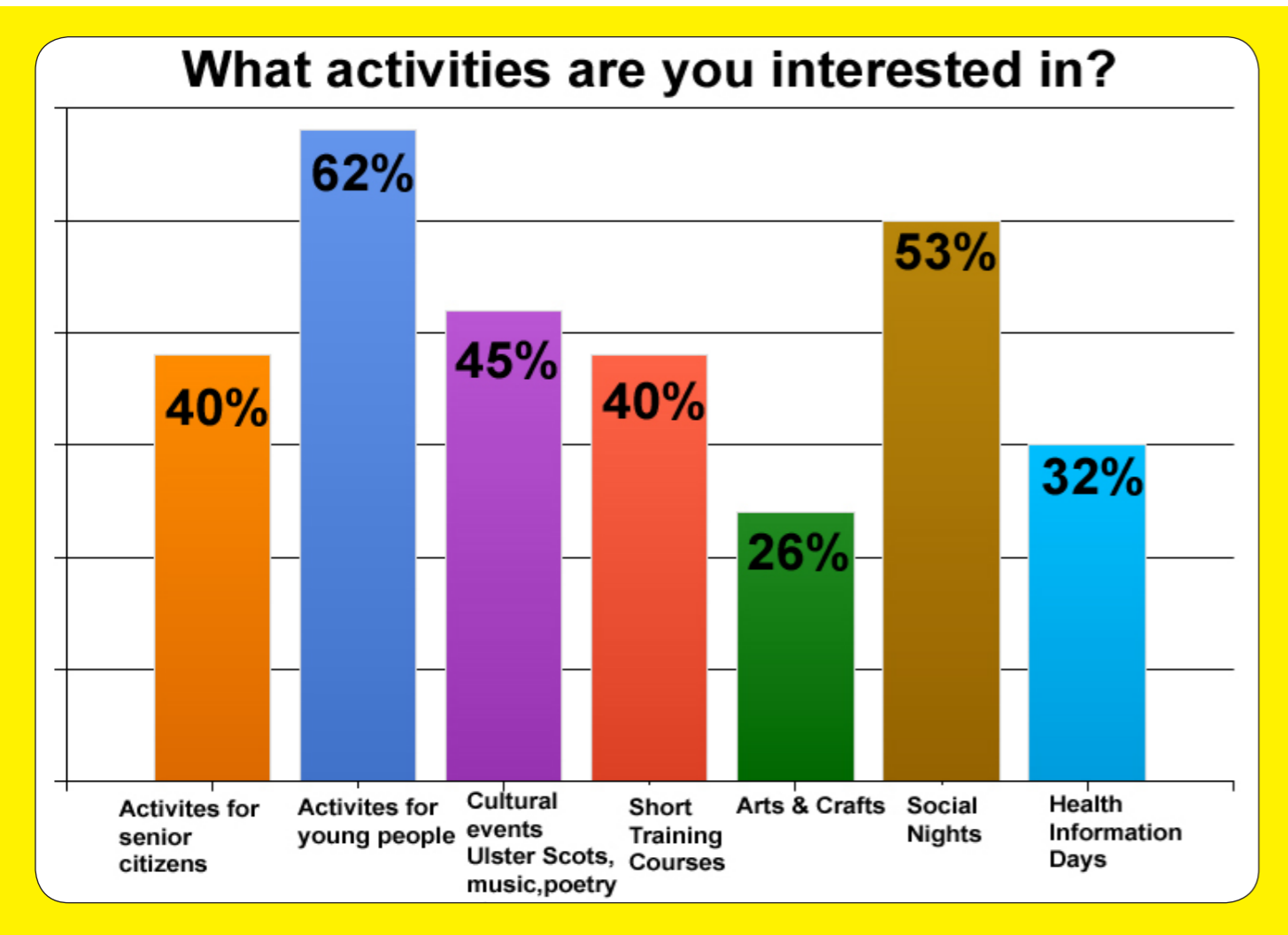


Figure 4



"Ulster Scots Activities"



"Activities for young people"

## Economy

Dereliction was clearly evident on the first visit to Mosside, this was noted several times throughout the consultation. Many people stated this gave the village a poor image for future investors. It was also noted that there was no supermarket in the village although plans are approved for one but have not been realised yet.

Residential development has also been approved in the village some of which has been built but has yet to be sold. It was evident from the community that there is a lack of jobs in Mosside with many people travelling to Ballycastle, Coleraine and further afield.



"Would like a Community Cafe"

A large majority of the community would like a community cafe where people could meet friends and visitors could use to stop at when travelling through the village. It was thought this could be a potential method of reviving the economy in the village.

## What would you like to see in Mosside?

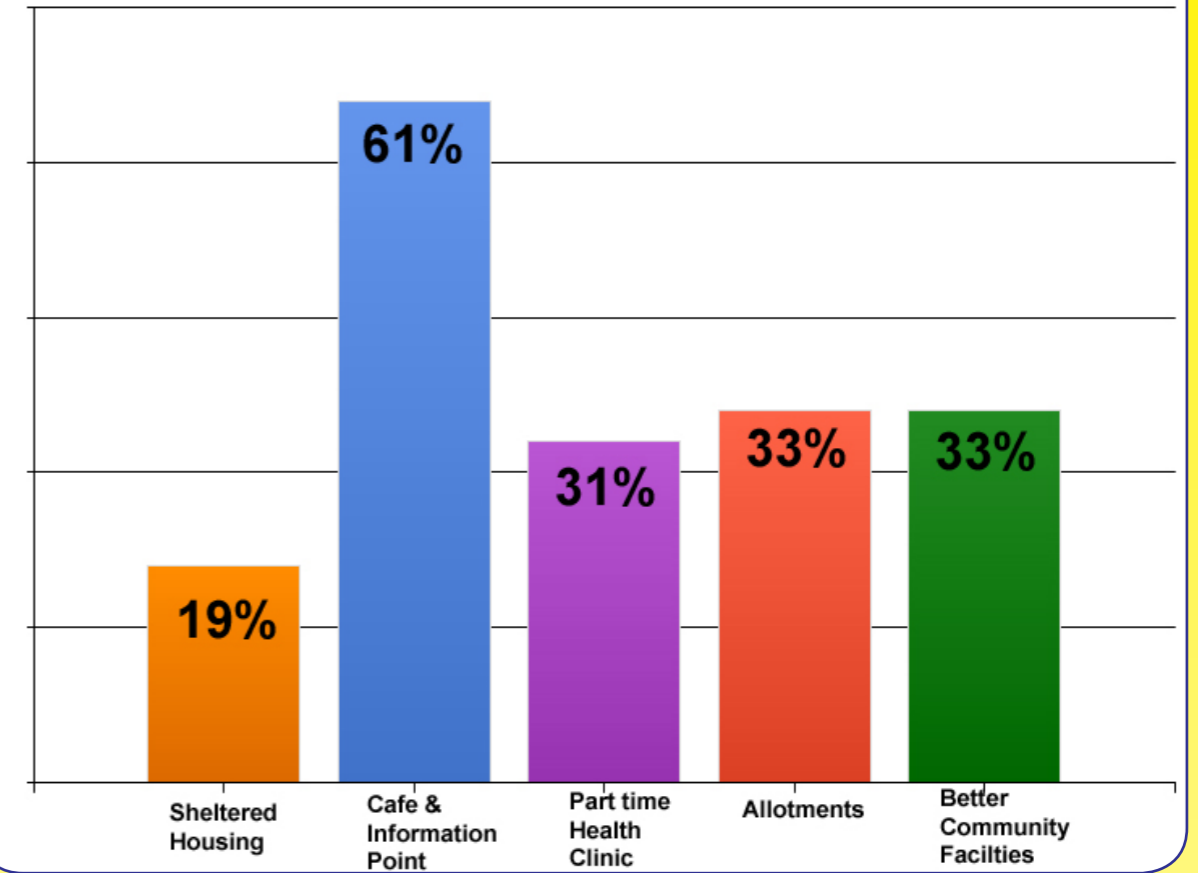


Figure 5

Houses image yet  
 economy sold  
 cafe community poor  
 Community jobs supermarket  
 allotments  
 Dereliction  
 future investors  
 lack  
 reviving



Soft Tiles in Play Park



"Community Allotments"

## Facilities

The consultation exercises carried out highlighted the services and facilities that exist in Mosside and those that are needed. Existing services and facilities include the following:

- Local shops
- Chip shop
- Petrol station
- Mosside Independent Band Hall
- Mobile Library service every third Wednesday of each month.
- Football pitches and Play Park
- Clodders pitch
- The Community Portacabin
- The Community Centre
- Health Care Centre and Pharmacy

Recreational facilities in Mosside are very good. These facilities are well maintained by local representatives and Moyle District Council. The facilities are well used by local residents and sport teams from surrounding areas. It was noted in the workshop events that the existing play park surfacing material is not safe or hygienic for young children to play in. This needs to be addressed so the play park can be utilised to its full potential.

From the consultation with groups and the community survey facilities that were needed an outreach Post Office, a cash point and a

better variety of retail facilities. Respondents of the community survey stated improvements could be made to community facilities in the village, this included flooring in the barn area of the Community Centre. More than half of the respondents surveyed stated they would like a Cafe integrated with an Ulster Scots information centre.

Young people who took part in the consultation would like to see more activities in Mosside and an area in the village to use, for example, a youth room.

Transport from Mosside to Coleraine was seen as poor especially in the evenings.



Mosside Community Centre



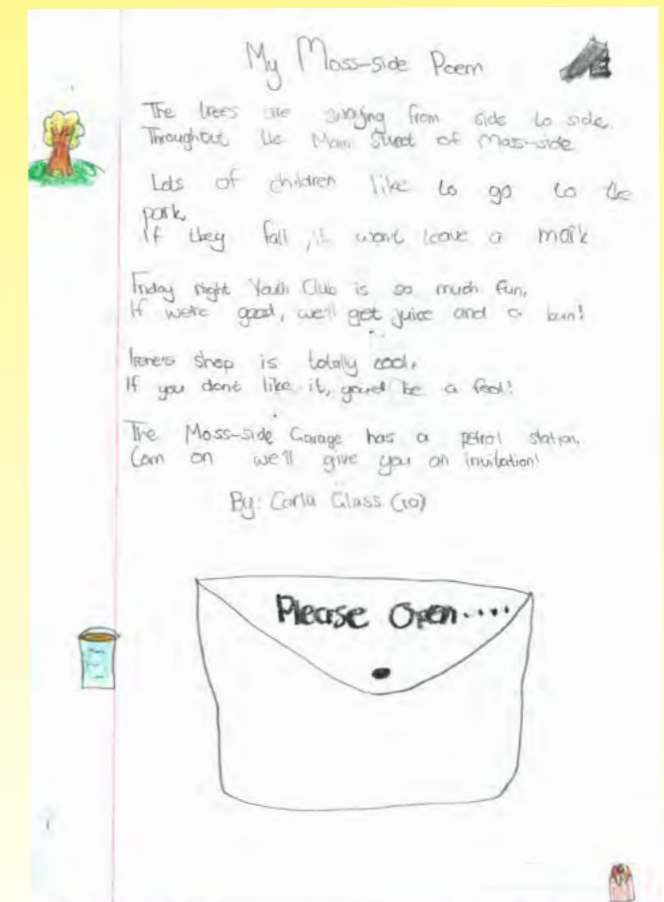
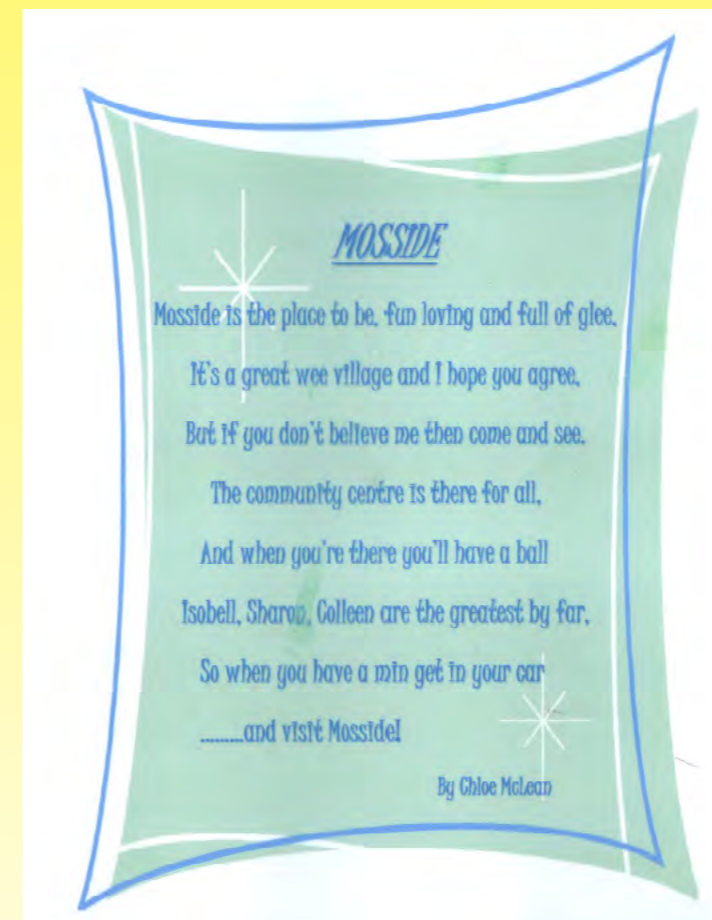
Consultation feedback Event, Mosside

## Youth Participation in Consultation



### Competition Winners

Chole McClean  
Brittany Taylor  
Carla Glass





# Developing Proposals

The following projects have been identified from the various elements of the village plan process including, discussions with Mosside Development Group, local groups and clubs, statutory and other bodies; desktop analysis and the Community Survey Results.

Project	Project Details	Partners	Time
1. Improving Community Facilities	<ul style="list-style-type: none"> <li>Improving the play park surface</li> <li>Improving the community centre</li> <li>Improving community services</li> <li>Improving signage</li> </ul>	<ul style="list-style-type: none"> <li>Moyle District Council</li> <li>Mosside Development Group</li> <li>Rural Development Programme</li> </ul>	S L M S
2. Improving derelict sites and vacant buildings	<ul style="list-style-type: none"> <li>Improving the appearance of derelict sites and buildings.</li> </ul>	<ul style="list-style-type: none"> <li>Moyle District Council</li> <li>Mosside Development Group</li> </ul>	L
3. Community Allotments	<ul style="list-style-type: none"> <li>Identify a potential site for the allotments</li> <li>Potential allotment competitions</li> <li>Visit good practice examples of other successful projects</li> </ul>	<ul style="list-style-type: none"> <li>Moyle District Council</li> <li>Mosside Development Group</li> <li>Rural Development Programme</li> <li>Groundwork NI</li> </ul>	M
4. River Walkway	<ul style="list-style-type: none"> <li>Walking trails</li> <li>Promotion of Ulster Scots through Public Art</li> </ul>	<ul style="list-style-type: none"> <li>Groundwork NI</li> <li>Mosside Development Group</li> <li>Moyle District Council</li> </ul>	L L
5. Community Hub	<ul style="list-style-type: none"> <li>Ulster Scots Information Centre</li> <li>Community Meeting Space</li> <li>Community Cafe</li> <li>Retail units with Post Office facility and ATM</li> <li>Indoor sports hall</li> </ul>	<ul style="list-style-type: none"> <li>Mosside Development Group</li> <li>Moyle District Council</li> <li>Rural Development Programme</li> </ul>	L

## Short Term Actions

Project	Project Details	Partners
1. Dog fouling bins	<ul style="list-style-type: none"> <li>Mosside Development Group should lobby Moyle District Council for dog fouling bins</li> </ul>	<ul style="list-style-type: none"> <li>Moyle District Council</li> <li>Mosside Development Group</li> </ul>
2. Tree/flower planting	<ul style="list-style-type: none"> <li>Mosside Development Group should contact NIHE regarding funding for planting schemes in Housing Executive estates</li> </ul>	<ul style="list-style-type: none"> <li>N.I.H.E</li> <li>Mosside Development Group</li> </ul>
3. Develop links with other villages in the district	<ul style="list-style-type: none"> <li>Liaise with development groups in other villages with the support of Moyle District Council</li> <li>Possibly hold joint events</li> <li>Learn from successful projects by other groups</li> </ul>	<ul style="list-style-type: none"> <li>Moyle District Council</li> <li>Mosside Development Group</li> </ul>



Main Street, Mosside

# 1. Improving Community Facilities, Services and Capacity

## 1a) Improving the Play Park Surface

During the village plan consultation process it was mentioned many times that the play park at the rear of the Community Centre is not being fully utilised. Reasons for this are the bark flooring in the play park is unhygienic and glass and dirt is often caught between the bark. The bark flooring requires regular maintenance by Moyle Council which over time is quite costly. It is recommended that the ground surface in the play park be replaced with soft tiles. A costing for this is in Appendix 2.

### Next Steps

- Mosside Development Group should lobby Moyle District Council to replace the play park surfacing.
- Mosside Development Group could lead the community in a clean up scheme so that the play park is safe for use in the interim period.
- Moyle District Council should consider installing soft tiles in the play park.

## 1b) Improving Community Centre

The community centre interior was recently upgraded however it requires additional facilities such as a multi use indoor sports hall, and meeting rooms in order for the space to be utilised more by community groups for activities and events.

The existing floor in the centre allows controlled usage. During the consultation the community stated the improvements to the centre require re-flooring the ground surface, upgrading the heating and air conditioning system and upgrading the roof and installing a suspended ceiling.

### Next Steps

- Moyle District Council should investigate the

possibility of claiming funding from the Big Lottery Awards For All and Spaces and Places grants to improve the existing facilities at the community centre.

- Moyle District Council to prepare a feasibility study to look at options for upgrading the community centre.

## 1c) Improving Community Services

Many people throughout the consultation process of the village plan said there is a lack of banking facilities in the village. There is currently no cash point and no facilities to use a credit or debit card in any of the local businesses. Many said this was inconvenient especially for people without means of transport to go to Ballycastle to the nearest cash point.

In the short term an outreach Post Office facility could be incorporated into a community building in order to help improve services. For further information on longer term proposal for a Post Office facility see the good practice example in the Community Hub proposal.

### Next Steps

- Mosside Development Group should with the assistance of local Councillors lobby for an ATM machine and an outreach Post office facility in the village.

## 1d) Improving Signage

When visitors enter Mosside it is not welcoming or sense of place is not gained, a village entrance sign would improve this.

Within the village itself there is no signage to key buildings or facilities such as the Community Centre or playing fields. This was highlighted numerous times during the consultation from a

safety and tourism perspective it is an important issue. Therefore signage for facilities should be put in place.

Ulster Scots Culture is also an important aspect to the village there has been recent work done to bring these traditions alive in Mosside through public art, this has the potential to be developed further for trails related to the Ulster Scots culture. Interpretative signage to explain the Ulster Scots language or culture would aid the visitor experience.

Specific signage projects could be developed such as village entrance signs, way marker signs for walkways and interpretative signage for trails/information points.

### Next Steps

- Mosside Development Group should visit the good practice examples to see successful signage projects in other villages.
- With Council support Mosside Development Group could apply for funding (when available) from the Rural Development Programme to take this project further.

## Good Practice Examples

### Saintfield County Down

Saintfield regeneration took place as part of the Rural Development Programme, Saintfield is located on a main arterial route from Belfast to Downpatrick. Five eye catching signs were placed at each of the arterial routes into Saintfield. Display boards showing places of interest are also on show around the village and a handy walkabout guide is available from the local village shops and library. Residents of the village wanted people to stop and take in the sights and not just a place to pass on the way to Downpatrick.



### Ulster Scots Signage, Newtownards

Ulster Scots signage projects have been developed in other places such as Newtownards in County Down as shown in the images. A similar project could be developed in Mosside in order to reflect the Ulster Scots culture of the village.



## 1e) Capacity Building

In order to progress these projects, local groups will require support for project development, implementation, fund-raising and management. This support could take a number of forms including:

- Workshops and training;
- Good practice visits;
- Advice and support from community development organisations (e.g. North Antrim Community Network);
- Technical support for feasibility studies, business plans, etc;
- Hands on mentoring and training.

### Next Steps

- Mosside Development Group should tap into the support mechanisms that are in place to access training and help source funding to continue with the development/administration worker and also funding for best practice visits.
- Potential funders could include the Big Lottery Fund's Awards for All Programme.

## 2. Improving Derelict Sites and Vacant Buildings

Derelict sites and vacant buildings are a key problem in Mosside, it is necessary for the Village Plan to action improvements to be made to affected sites.

During the consultation stage of the Village Plan process it was hard to make contact with the landowners of the sites shown below. Therefore given that the sites are in private ownership the Mosside Development Group and Moyle District Council are limited to what can be done on the sites, however people said during the consultation that more work similar to the site at No 5 below would be a positive development for the village. Developers whom contact was made with were happy for the community to improve the look of the sites/buildings for a temporary period until development would be realised on the sites. It is necessary for the Village Plan to action improvements to be made to affected sites.

These include the following:

### 1. Petrol Station, Moyarget Road



### 2. Land adjacent to No 2 Main Street



### 3. Land adjacent to No 31 Main Street



### 4. 16 - 20 Main Street



### 5. 15 - 17 Main Street



### 6. Old school site, 201 Moycraig Road



## Next Steps

A virtual street scheme in Mosside has the potential to transform the centre of the village.

- It is recommended that Mosside Development Group visit the Perry Street good practice example with the support of Moyle District Council.
- With the support of Moyle District Council Mosside Development Group could implement a community clean up scheme to keep derelict sites tidy in the short term. Mosside Development Group should lobby local Councillors to support this project.
- With the assistance of Moyle District Council

- Mosside Development Group could develop project proposals and bid for funding
- Local councillors should assist Mosside Development Group through the stages of implementing this project.

## Good Practice Example

### Perry Street, Dungannon

Perry Street in Dungannon consisted of a row of run down and derelict buildings, a new virtual street scheme has transformed these properties. Several shopfronts have been visually created to provide a sense of reality and create the impression that the properties are actually occupied. Perry Street now has a virtual guitar shop, fruit and veg shop and an art gallery. This unique scheme is a way of addressing dereliction by using a creative approach.

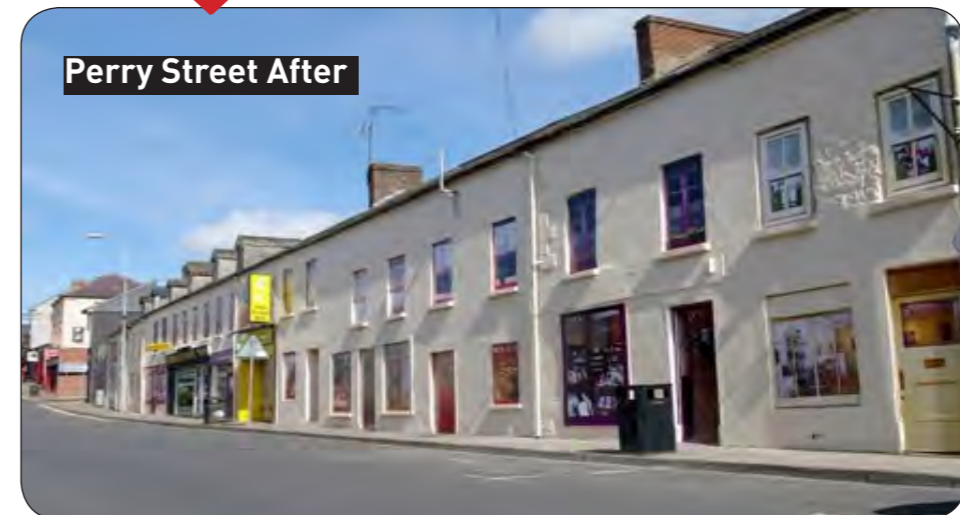
It is hoped that this new scheme will attract new interest in the properties and help encourage investors in Dungannon. The funding for the scheme came from DSD, Dungannon and South Tyrone Borough Council, Dungannon Regeneration Partnership and Dungannon Enterprise Centre.



Perry Street Before



"Virtual Street"



Perry Street After

### 3. Community Allotments

The community survey asked respondents if they would like to see community allotments developed as a project in Mosside, this was clearly welcomed. Further consultation with the local community groups found there had been on going discussions with Moyle District Council about this type of project. Moyle District Council expressed interest in supporting a community allotment in Mosside, the Council are willing to discuss a potential site with Mosside Development Group - land located close to the Portacabin.

#### Next Steps

- Mosside Development Group should engage with Moyle District Council and the local community to identify a site for the allotments and develop the project.
- A Feasibility study should be carried out for the project - Mosside Development Group should contact Groundwork NI to discuss the costs of a Feasibility Study for a Community Allotment.
- The Mosside Development Group should make contact with Cloughmills Incredible Edible Project to examine the potential of developing a similar project in Mosside. Funding could be sourced through the Rural Development Programme.
- Allotment competitions could be developed to get the community involved in the project once it is developed.

#### Good Practice Examples

##### Cloughmills Incredible Edible Project

[www.incredible-edible-todmorden.co.uk](http://www.incredible-edible-todmorden.co.uk)  
and  
<http://www.incredible-edible-todmorden.co.uk/blogs/incredible-edible-cloughmills>

The Incredible Edible project was first established in Todmorden in 2008. It is an initiative which helps people learn how to grow food, eat healthier diets, and encourage all age groups to become more active in their community. The initiative is a great way of engaging with young people, including schools and youth clubs, inter-generational and hard to reach groups.

Cloughmills has recently developed an Incredible

Edible project working with young people to grow food in small places including plant boxes, raised beds and square foot gardens throughout the village.

##### Groundwork NI- 'Grow Our Own' Initiative

This is a community based gardening project which supports local communities through training sessions and sharing good practice.

<http://www.northernireland.groundwork.org.uk/>

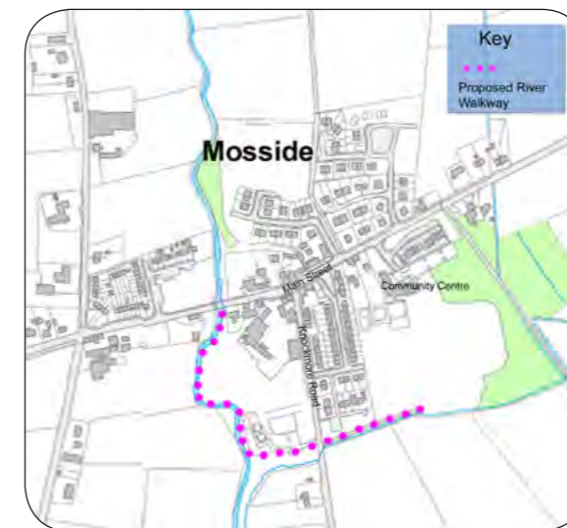
David Carver Tel: 028 9074 9494  
davidcarver@groundworkni.co.uk



### 4 River Walkway

A River Walkway project in Mosside has been explored by Mosside Development Group. This type of project could provide health benefits to local residents and visitors who use and it would also improve the visitors' experience.

The river walkway will run along the Mosside River from the bridge on Main Street to Knockmore Road. The existing land is overgrown and neglected waste ground which could be put to better use to provide a village amenity that will benefit residents and visitors. The river walkway will incorporate seating, planting and public art related to the Ulster Scots culture of the village. The map shown below indicates the proposed location of the river walkway.



#### Next Steps

- Mosside Development Group could visit the good practice examples to see how other groups undertook their projects to get ideas.
- Mosside Development Group could work collaboratively with Moyle District Council to identify land ownership of the proposed walk way route and secure agreements in principle on rights of way.
- Costing for this project was undertaken by Groundwork NI in 2009 - see appendix 3 an updated version of this would be required.
- Mosside Development Group could secure funding to draw up detailed plans and costings for the proposal with support of Moyle District Council.
- Mosside Development Group could liaise with the Ulster Scots Agency for advice on potential sources of funding available for Ulster Scots related trail along the River Walkway.

#### Good Practice Examples

##### Poets' Glen Creggan, County Armagh

This walkway encompasses a series of artworks based on the theme of peace and reconciliation. The artwork is related to the rural and natural landscape setting, workshops were undertaken with local people and school children from the locality.



##### The Burn Walk Drumrallagh Strabane

Residents in the area started to make improvements to derelict land adjacent to their housing estate. Those involved in the project included local school children and local volunteers. Fun days were held which allowed local people to have input into the physical design of the site. The project involved site clearance, tree planting, installation of benches and an entrance feature. The project was funded by Fountain Street Community Development Association and Strabane District Council with NIHE and the Woodland Trust's support. The Fountain Street Community Development Association has been awarded the contract by the Woodland Trust for ongoing maintenance and further site works, creating a degree of local employment.



During the consultation process for the village plan many individuals said there was no central area in Mosside to meet friends or to stop at if

## 5 Community Hub

passing through Mosside. Many people liked the idea of a community cafe and an Ulster Scots Information centre. Therefore as part of the village plan it is recommended that a Community Hub area is identified in the village, this could possibly be located at the existing community centre. This type of facility could encompass the following and be operated as a community enterprise: -

- **Ulster Scots Information Centre**

There are strong traditions of the Ulster Scots culture in Mosside and this is a way to attract visitors to the village. For example the Clodder's Club could demonstrate horseshoe throwing, the community could hold events related to the Ulster Scots culture such as dancing, music or exhibitions. These types of activities could attract people interested in Ulster Scots from all over the region and it could help integrate nearby villages with Mosside. A local information office could be also provided within the centre, this could be used by Mosside Development group in order to secure their future sustainability.

- **Community Meeting Space**

This facility could also allow the community groups in Mosside to use rooms for meeting space, these rooms could also be hired to individuals or groups which could provide revenue for the community.

- **Community Cafe**

This service will provide visitors and residents a place to stop off at to meet friends or to have a coffee break whilst travelling. The project could be a community run enterprise whereby residents have the opportunity to run their own businesses, gain employment and train others in business skills and trades.

- **Retail Units with Post Office facility and ATM cash point**

Mosside had a Post Office on Main Street but unfortunately this closed. The community consultation highlighted that a post office service even of a limited nature would be most useful in the village. This facility will bring back a Post Office facility which will incorporate a cash point will offer convenience for residents and visitors to Mosside.

- **Indoor Sports Hall**

The existing sports hall facility in the Community

Centre is inadequate for the needs of the community, an upgraded facility would allow more people to use the hall for different sporting activities, events and meetings.

### Next Steps

- Mosside Development Group should liaise with the Ulster Scots Agency about funding opportunities for Ulster Scots events and the provision of an Ulster Scots Information centre
- With the support of Moyle District Council Mosside Development Group should visit/ research good practice examples of community enterprises
- Mosside Development Group could get a feasibility study carried out to explore suitable sites including the community centre option.
- The next stage of the project would involve a feasibility study and business plan. The cost of this is approximately £10,000.

### Good Practice Examples

### Snowdonia Welsh Language Village and Information Centre

The Snowdonia Welsh Language Village and information centre project encompasses a café, a shop and wedding and conference facilities. The Centre specialises in Welsh residential courses for Welsh learners. The centre offers information on the history of the village through interactive learning methods. Due to the facilities available at the centre the village has become a tourist attraction.



### Outreach Post Office Services available in Northern Ireland



There are four outreach Post Office Services available in Northern Ireland, these include :

- Partner Service - a local business runs a Post Office service from their premises e.g. local shop

Examples: Moneyglass Toomebridge

- Hosted Service - A subpostmaster from the nearby core Post Office visits a community at fixed times and provides from a community hall or local shop

Examples: Ballyvoy Ballycastle, Moorfields Ballymena

- Mobile service - A subpostmaster from the nearby core Post Office visits a location in a vehicle fitted with Post Office equipment at fixed times each week

Examples: Monea Enniskillen

- Home delivery Service - A subpostmaster from the nearby core Post Office branch offers a limited service to registered customers door to door or at a drop in session at a designated place.

Examples: Dunseverick Bushmills,

# Appendix 1

## Community Survey

# Mosside Village Plan Community Survey

## Please Have Your Say

### What is this survey about?

- This survey will identify the needs of people in Mosside and assist with the development of a Village Plan for the area.
- The survey is being undertaken by Mosside Development Group and Community Places with the support of Moyle District Council.

### What do I do?

- Just complete the survey and place it in the envelope provided.
- One of our volunteers will call to collect it within the next few days.
- Or you can return your survey to the box in the local newsagents, the portacabin beside the community centre or the chip shop.

All answers provided in the survey will be treated in confidence and individuals will not be identified. All questions are optional - please complete those of interest to you.

### For Further Information Contact:

**Marion Mc Dowell Mosside Development Group on  
028 207 419 24**

**Clare at Community Places on 028 90 239 444**

**1. Do you live in Mosside?**

Yes  No

**If yes, how long have you lived in Mosside?**

Less than 1 year  2- 5 years  6-10 years  11 – 20 years  
 Over 20 years

**If no, what is your reason for visiting Mosside?**

Passing through on the way to Coleraine  To use services in Mosside e.g. shop  
 Visit friends/family  To attend a group meeting  
 To attend events in Mosside

**The Environment**

**2. What environmental changes do you think Mosside needs?**

Trees/flowers  Improved signage for the area  Benches/seating  
 Bins  Other (please specify)

**3. Which of the following are key problems?**

	Strongly Disagree	Disagree	Don't Know	Agree	Strongly Agree
Dumping	<input type="checkbox"/>	<input type="checkbox"/>	<input type="checkbox"/>	<input type="checkbox"/>	<input type="checkbox"/>
Derelict sites	<input type="checkbox"/>	<input type="checkbox"/>	<input type="checkbox"/>	<input type="checkbox"/>	<input type="checkbox"/>
Dog fouling	<input type="checkbox"/>	<input type="checkbox"/>	<input type="checkbox"/>	<input type="checkbox"/>	<input type="checkbox"/>
Repairing & cleaning footpaths	<input type="checkbox"/>	<input type="checkbox"/>	<input type="checkbox"/>	<input type="checkbox"/>	<input type="checkbox"/>
Other (please specify)	<input type="checkbox"/>	<input type="checkbox"/>	<input type="checkbox"/>	<input type="checkbox"/>	<input type="checkbox"/>

**4. What activities would you or your family be most interested in?**

<input type="checkbox"/> Activities for senior citizens	<input type="checkbox"/> Social nights – darts, quizzes, dances
<input type="checkbox"/> Activities for children and young people	<input type="checkbox"/> Health information days for all
<input type="checkbox"/> Cultural activities – Ulster scot events, Music, poetry, exhibitions	<input type="checkbox"/> Short training courses - E.g. Computer classes
<input type="checkbox"/> Arts and Crafts -E.g. Cake decoration, flower arranging	<input type="checkbox"/> Other (please specify)

**5. Which of the following would you like to see in the village?**

<input type="checkbox"/> Sheltered Housing	<input type="checkbox"/> Allotments
<input type="checkbox"/> Café and tourist information point	<input type="checkbox"/> Better Community Facilities (please specify)
<input type="checkbox"/> Part time Health Clinic	<input type="checkbox"/> Other (please specify)

**6. Please tell us what is good about living in Mosside?**

**7. Please tell us what is not so good about living in Mosside?**

8. Do you have any ideas for activities or events in Mosside?

9. Have you any other comments or suggestions you would like to make?

**About You**

Are you:  Male  Female

**What is your age group:**

Under 18 years old  19-35 years old  36-50 years old  51 - 60 years old

Over 60 years old

**Please give your completed survey to one of our volunteers when they call with you or drop it off in the box in the local newsagents, the Portacabin beside the community centre or the chip shop.**

Thank you very much for your ideas and help.

April 2011



# Appendix 2

## Costing for Play Park Re-surfacing



<b>Mossie Play Park Approximate Costing August 2011</b>		
<b>Item</b>	<b>Approximate Quantity</b>	<b>Approximate Cost</b>
Excavation and disposal of existing bark	249 m3	5976.00
Stone hardcore sub base to new level	24 m3	4980.00
porous open textured bitmac to play area pathways	469 m2	6190.80
Post installation inspection report	1	350.00
Site set up, demobilisation and reinstatement	1	1000.00
Double swing area surfacing	41 m2	2308.30
Concrete edge kerbing to perimeter of safety zone	25	330.00
Single swing area surfacing	21 m2	1182.30
Concrete edge kerbing to perimeter of safety zone	19	250.80
Toddler unit surfacing	48 m2	2604.00
Concrete edge kerbing to perimeter of safety zone	31	409.20
Three way roundabout surfacing	26 m2	1410.50
Concrete edge kerbing to perimeter of safety zone	18	237.60
AB climber surfacing	29 m2	1573.25
Concrete edge kerbing to perimeter of safety zone	20	264.00
seasaw re surfacing	21 m2	1139.25
Concrete edge kerbing to perimeter of safety zone	18	237.60
Senior Unit re surfacing	99 m2	6385.50
Concrete edge kerbing to perimeter of safety zone	47	620.40
cantilever swing 1 surfacing	38 m2	2295.20
Concrete edge kerbing to perimeter of safety zone	22	290.40
cantilever swing 2 surfacing	38 m2	2295.20
Concrete edge kerbing to perimeter of safety zone	22	290.40
<b>Total</b>		<b>42620.70</b>
Vat @ 20%		8524.14
<b>Total</b>		<b>51144.84</b>

# Appendix 3

## River Walkway Costing

**Mossie Riverwalk Approximate Costing Oct 2009**

Item	Approximate Quantity	Approximate Cost
Form opening in boundary wall to bridge	N/A	600
Form retaining wall using stone gabions to form ramp at bridge	N/A	10000
Clear site of vegetation	N/A	500
Excavation	700 sqm	4200
Hardcore	700 sqm	4690
Timber Edging	700 sqm	4550
Surface Finish	700 sqm	12180
Steps	10	750
Gates	2	2500
Barriers	2	1000
Handrail	15 metres	3000
Notice/information boards	2	2000
Artwork	N/A	5000
Footbridge over river	N/A	15000
Contractors insurance and prelims	N/A	8000
Total		73970
Contingency sum		5000
Fees - Architect/QS/Eng/CDM Coordinator		12000
<b>Total</b>		<b>90970</b>
VAT @17.5% (2009)		15920
<b>Total</b>		<b>106890</b>



**Mosside**  
**Village Plan**  
June 2011

