



PB Works – Housing led PB approaches

Duncairn Centre, Monday 05 November 2018



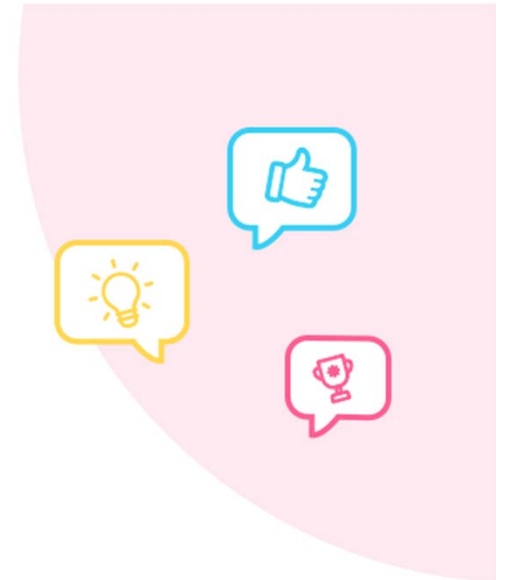


Dr Louise O’Kane – Welcome



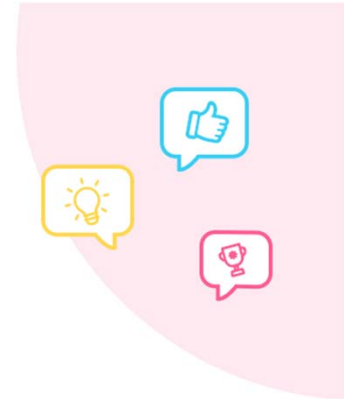
PB Works Project

- BCT: Civic Activism Programme
- Collaborative effort
- Raise awareness of and advocate for Participatory Budgeting
- 4 Thematic PB Workshops
- Tailored Training and Support - working with PB Partners and Democratic Society



PB Works

- PB processes on the ground:
- Rathlin Island – ‘**Grugach’s Gold**’
- Mourne, NMDDC and Partners ‘**Communities Leading Change**’
- Downpatrick, Parent Action – ‘**Getting our Voices Heard**’
- Fermanagh and Omagh DC – Policing and Community Safety; Antrim and Newtownabbey BC - Youth; Newington Housing Association – Tenant Participation; Forward South Partnership – Communities and Regeneration.





Siobhan McCauley, Director of Regional Services Housing Executive – Opening Remarks





Alan Budge, PB Partners: What is PB? And How PB can enhance tenant and community participation



INTRODUCTION TO PARTICIPATORY BUDGETING (PB)



PARTICIPATORY BUDGETING?



People have direct decision making powers on how to allocate part of a public budget

*'If it feels like **we** have decided ---- it's PB.*

If it feels like someone else has decided, it isn't.'

Brazilian resident involved in PB



HEALTH WARNING!

Only a small percentage of any public budget will be allocated using PB

The PB process is formally mandated and 'signed off' by the elected legislature

Supporting Representative Democracy

ORIGINS OF PARTICIPATORY BUDGETING



Began in Porto Alegre, Brazil in 1980s – city of 1.5m people

End of military dictatorship and election of Workers' Party



DEVELOPMENT OF PB



Now in 300+ cities worldwide, including Latin America, Canada, USA and over 25 in Europe

Identified as good practise by international institutions, including World Bank, UNESCO, OECD, UN Habitat prize, and DFID

175 + examples of UK pilots

Links with the 'localism' agenda



PB worldwide



The Scottish Government
Riaghaltas na h-Alba

International examples



- Paris: 426m euros to 2020, 5% of the city budget.
- Portugal: 80,000 voters in its 3m euro national PB
- Nordic Countries: school/ neighbourhood/ environment



IN SCOTLAND



Over £15 million has been allocated by PB across Scotland to date.

All 32 Local Authority areas engaged in some form of PB

Scottish Govt have invested £6.5m in support to PB
Community Choices fund, support to PB programme development

Participatory budgets ranged from £750 to £500k

Projects have been delivered under a wide range of themes – health and social care, economic development, transport etc.



November 2017: SG and COSLA announce agreement for 1% of LA budgets to be allocated through PB by 2021.

- Equates to £100m.

POSSIBLE PB MODELS



Small grants allocation



Mainstream Investment



SMALL GRANTS ALLOCATION



A grants pot / initiative funding
- community chest, etc



Bidders present proposals to residents,
who vote on which to support



Limited impact on mainstream

Effective at engaging, networking
and enthusing local people



MAINSTREAM INVESTMENT



Scottish Govt commitment to 1% of Local Authority budgets allocated via PB.

- EDINBURGH: £500K of youth provision budget.
- WESTERN ISLES – £500K bus programme
- DUNDEE - £1.2m across disadvantaged wards
- DUNMFRIES AND GALLOWAY - £250k to address poverty

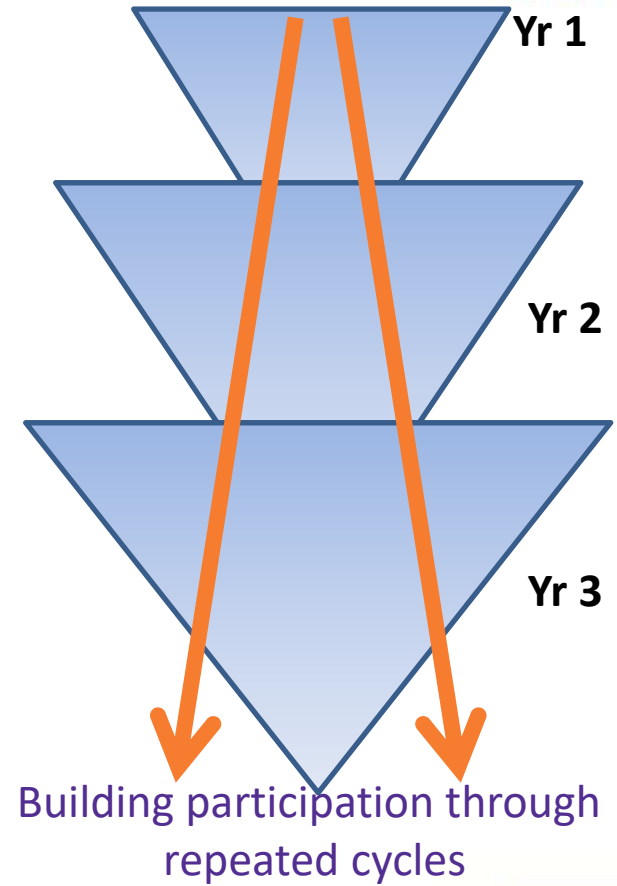
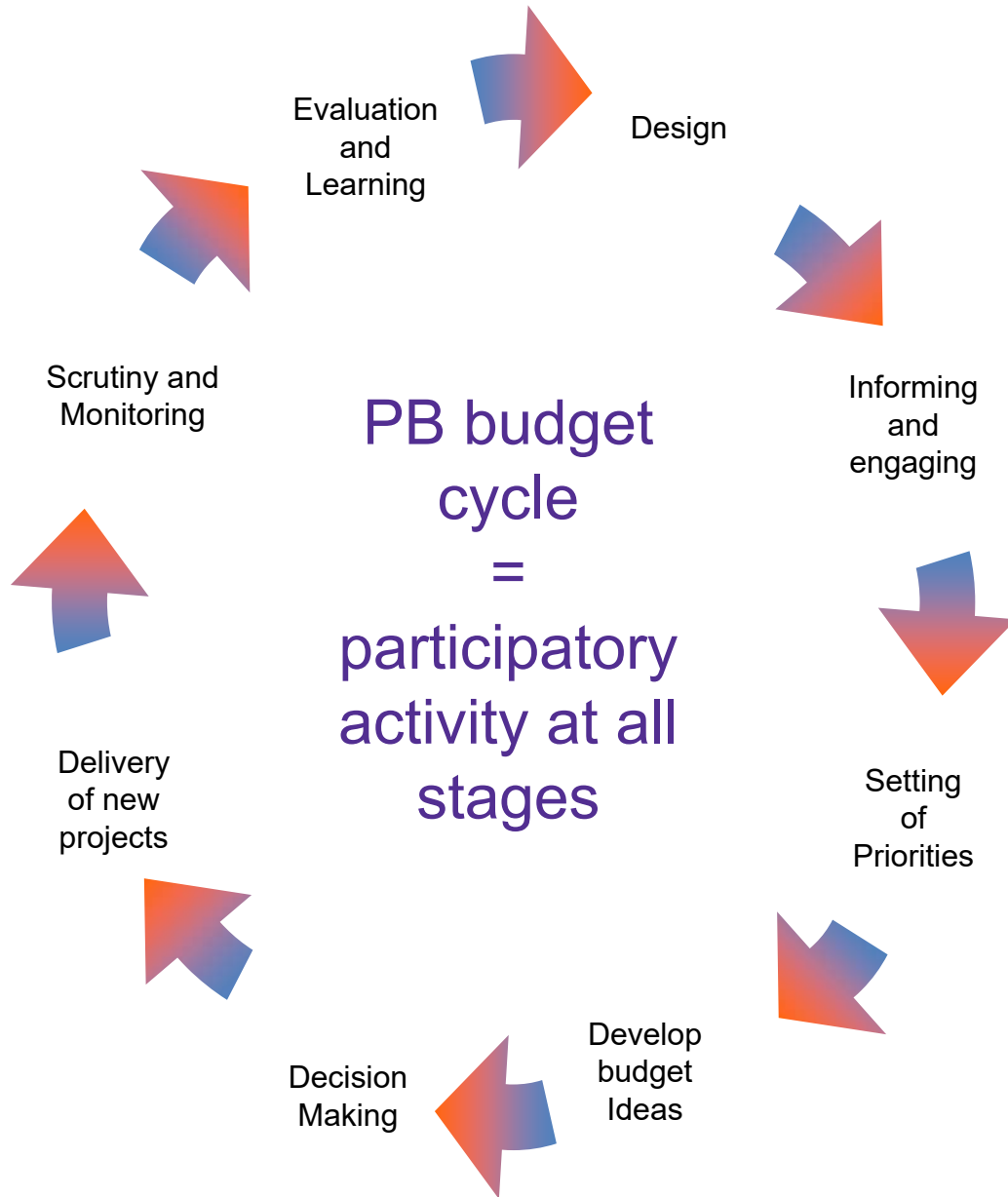


The Budget Matrix



Geographic Area	Priority total	Need total	Population total	Total Score	% of total city score	Resource available (£41,200)
Area A	6	6	9	21	12.9%	£5,314
Area B	3	9	6	18	11%	£4,544
Area C	12	12	6	30	18.4%	£7,581
Area D	3	2	2	7	4.3%	£1,772
Area E	12	2	2	16	9.8%	£4,038
etc	~	~	~	~	~	~
Total for all areas of the city				163	100%	£41,200





“I approached this as a local officer would, who thought I was in charge and I knew best. I was very firmly told by the residents that I wasn’t in charge and I didn’t know best – and they were absolutely right.”

Stuart Pudney: Deputy Chief Executive,
Yorks Police Authority

“The PB process has changed (for the better) out of all recognition our relationship with local officers and members”

Chris Parsons: local resident

PB - benefits and challenges



- What are the benefits of undertaking a PB process?
- What are the challenges of adopting a PB approach?

Questions and Answers

www.pbnetwork.org.uk

www.PBScotland.scot

www.pbpartners.org.uk



Chris Alexander, Chief Executive Triangle Housing Association: Sharing Experience and Learning



TRIANGLE

Building better lives together



PARTICIPATORY BUDGETING

Presented by Chris Alexander (CEO)

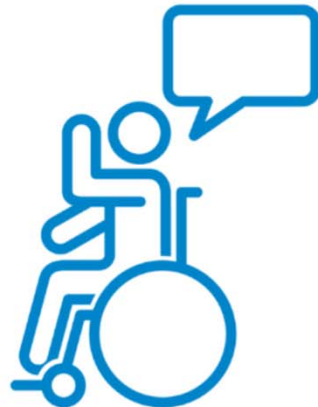


What is Participatory Budgeting?

Participatory Budgeting (PB) is a way for *local* people to directly vote on how *local* money should be spent.

PB comes in all shapes and sizes, but basically it looks like this:

1. Ideas are generated about how a budget should be spent



2. People vote for their priorities



3. The projects with the most votes gets funded



Mostly, participatory budgeting is about bringing people together at local events. Sometimes it also happens online, where digital tools can help even more people to get involved.

Why do it?

- **Deeper Democracy**
- **Transparency & Accountability**
- **Community Building**

Source: www.participatorybudgeting.org/what-is-pb/

TRIANGLE





WNoT Partners



Beyond Skin

diversity · global · education
arts · culture

Charo Lanao-Madden



How it worked

The project became known as the *“Big Dish Out”*.

- Local people were invited to put forward their ideas.
- Projects were pitched to neighbours and community. People from the area voted on their favourite project. You couldn't just choose one!
- The projects with the most votes got the money to make them happen. Those who didn't win the vote were supported. This could include connecting them to one of the winning projects and/or other groups or seeking other resources.

"IF IT FEELS LIKE WE'VE DECIDED THEN IT'S PB"

The Big Dish Out

2017-2018

SOME NUMBERS

**Cross Glebe /Harpur's Hill
&
Cushendall**



BIDS

32 Bids submitted
across the two areas

VOTERS - 10 YEARS AND UP

110 voters in Harpur's Hill
116 voters in Cushendall
5 votes each



FEEDBACK

65% of voters said the
process was good for
their community.
60% said they would
do it again.

THE WINNING BIDS

20 winning bids
across the two areas-
£300 each.



Projects Funded

- “Happy Hookers”: A support space for 50+ women with a passion for crocheting
- Establishing a drop-in space for teenagers
- Local Men's Darts & Pool Competition
- Crafting for good mental health
- Men's Shed
- Scooter Group
- Welcome signage increasing awareness and understanding of the Irish Language
- Purchase of equipment for a dancing school
- Purchase of music books for a local Comhaltas (traditional music group)
- Inter-Generational Relations / Gardening & Growing
- Community mosaic
- Local Safety - Reduction of speeding campaign
- Well-being Project-Sailing for families with autism
- Cheer Leaders Group
- Equipment for parents & toddlers group
- Local Sustainability - Equipment for Red Squirrel Group

What the group learned

- Local Ownership / Direct Involvement
- Courage and Generosity
- Redistributing Power / Representative Democracy
- Transparency

We had fun...
whilst making a difference....





P B



Links to Videos or Want to Learn More?

Harpur's Hill (Cross Glebe), Coleraine Event

www.facebook.com/wastenotimeproject/videos/250000255631296/

Cushendall Event

www.facebook.com/wastenotimeproject/videos/225436711462207/

<https://pbnetwork.org.uk/>

<https://pbpartners.org.uk/>

<https://www.wastenotime.net/>

PB AND HOUSING



REDCAR- COAST AND COUNTRY HOUSING 2009



- £60k made available from C and C's estate improvement fund – previously allocated by a small panel of residents
- 120 residents attended the voting day
- 20 projects – up to 5k per project – funded
- Range of projects from young peoples allotment to a solar lighting scheme



‘When people have a real say and control over what goes on in their community they take more care of and have more pride in their neighbourhoods’

Iain Sim, Coast & Country Chief Executive.

ROCHDALE BOROUGHWIDE HOUSING 2012-13



- £41K across 8 neighbourhood areas.
- Proposals invited that would link projects to existing neighbourhood action planning objectives eg, *‘Deliver safe, secure, attractive neighbourhoods; support friendly and inclusive communities’*



ROCHDALE BOROUGHWIDE HOUSING



- 1 pilot in one area – ‘to test the water’, then one large central event to allocate funding to other 7 areas.
- 43 of 46 respondents to evaluation questions thought this was a good way to distribute funds



LINKSFIELD – ABERDEEN 2015-16



LINKSFIELD –ABERDEEN



- £100k to be spent on improvements to buildings and outside areas
- Almost 50% of 153 households voted – either at a voting event or by postal vote



LINKSFIELD



Most popular projects:

- Replacing the flooring in each building
- Deep clean of each multi block
- Painting the inside of each building.



LINKSFIELD



‘The funding available via our UDecide programme has allowed our tenants and residents to address the issues that are most important to them.

All of our participatory budgeting projects have been very well received and have generated a great deal of interest and excitement in local areas where engagement with the council has previously been low’.

Aberdeen City Council leader Councillor Jenny Laing





Alan Budge and Chris Alexander Panel: Questions and Answers





Table Discussion

What are the opportunities and challenges to Housing led PB approaches across the region?





FEEDBACK

What are the opportunities and challenges to Housing led PB approaches across the region?





Table Discussion: Actions to take forward...



WHAT IS PARTICIPATORY BUDGETING

Participatory Budgeting can be described as "Local People deciding how to allocate part of a public budget."

FIND OUT MORE



JOIN THE PB NETWORK

The PB Works Network is free and open to anyone who is interested in participatory budgeting.

Network members are invited to contribute their ideas, learning and enthusiasm to advancing PB across the region.

BECOME A MEMBER

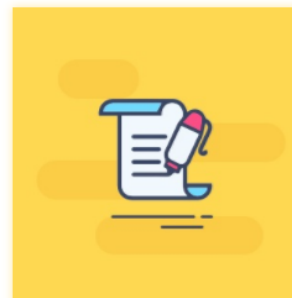
Having trouble with the form? Contact louise@communityplaces.info

www.participatorybudgetingworks.org

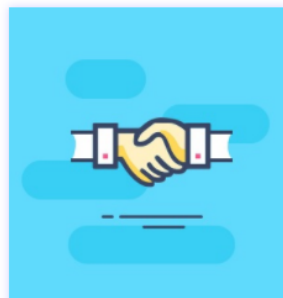
HOW TO GET INVOLVED



GO TO AN EVENT



JOIN THE NETWORK



SUPPORT OR RESOURCING

FIND OUT MORE RESOURCES

ALL

LINKS TO PB IN ACTION

VIDEOS

DOCUMENTS

PB SUPPORT WEBSITES

LINKS TO PB IN ACTION

HOLYWELL STEW



VIDEO

YOUR VOICE, YOUR CHOICE



DOCUMENT

PB CASE STUDY

The City of Edinburgh Council and the
Leith Partnership

PB SUPPORT WEBSITE

DUNDEE DECIDES



KATHLEEN GLAZIK
POLICY EXPERT - SCOTTISH GOVERNMENT

VIDEO

MAKING PEOPLE COUNT



DOCUMENT



VIDEO

TRIANGLE HOUSING
ASSOCIATION VOTE FOR FUN





Final Learning Event
Wednesday 28 November 2018
The MAC, Belfast 10.00 am to 13.00 pm





Evaluation
Thank-you for participating

